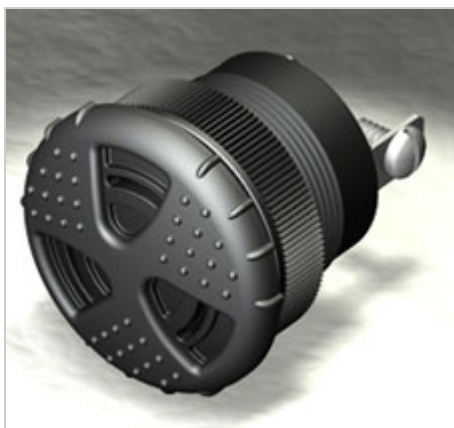


Turbo

TXB-V86-515-S(S)



More Information



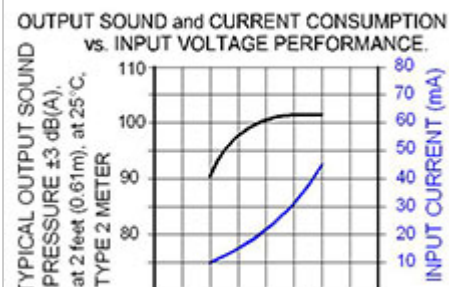
[Spec Sheet](#)



[UL Recognized](#)



RoHS Compliant



Specifications

Revision: 3.18

Turbo Extra Loud Beep Tone; Slow Rate; Panel Mount with Volume Control Case and Quick Connect Blades with Screws Termination

Mounting:	Panel Mount with Volume Control
Operating Mode:	Extra Loud Slow Beep Tone
Operating Voltage:	5-15 Vdc
Operating Frequency:	
Typical Operating Current:	10 mA at 5 Vdc 50 mA at 15 Vdc
Typical Sound Pressure:	92 \pm 5 dB(A), at 5 Vdc, at 24 inches (61 cm), at 25°C 103 \pm 5 dB(A), at 15 Vdc, at 24 inches (61 cm), at 25°C
Termination:	Quick Connect Blades with Screws
Termination Strength:	Pull test with a maximum of 22 pounds (10 kg) load
Operating Temperature:	-20_C to +65_C
Storage Temperature:	-40_C to +85_C
Surge Voltage:	20% over maximum rated voltage for less than 5 minutes
Reverse Voltage Protection:	To the maximum operating voltage
Construction Materials:	Internal Circuit- Audio-oscillator and piezoelectric driver Potting- 2 parts epoxy resin or silicone, black Diaphragm- Stainless Steel 304

Gasket:

Environmental Durability: ASTM B117 Certified - Withstands exposure to salt spray for 300 hours
IP 68 Certified - Withstands water submergence and dust exposure
Humidity- 95% relative humidity at +40_C continuously for 100 hours.
Vibration- Withstands vibration between 0 and 55 Hz. on all axes.

Life Expectancy:

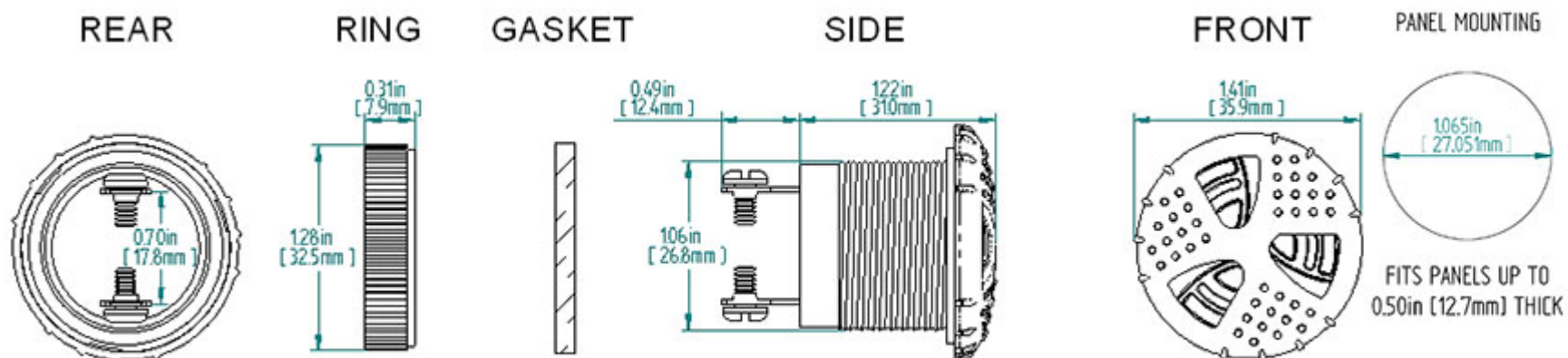
10 years under normal operating conditions.

Warranty:

For a period of two years from the date of manufacture under normal operating conditions.

[View Terms and Conditions of Sale](#)

Dimensions



TOLERANCES ARE ± 0.03 in (± 0.76 mm) UNLESS OTHERWISE SPECIFIED

"S" TERMINALS

