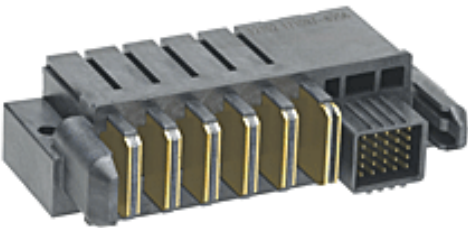


PLEASE CHECK WWW.MOLEX.COM FOR LATEST PART INFORMATION

Part Number: [171097-0011](#)
Status: **Active**
Overview: EXTreme EnergetiC™ High-Current Connector System
Description: EXTreme EnergetiC™ Right-Angle Plug Assembly, 29 Circuits (25 Signal/4 Power) with Press-Fit and Pegs Mounting



Series

image - Reference only

Documents:
[Drawing \(PDF\)](#)

[RoHS Certificate of Compliance \(PDF\)](#)

General

Product Family	PCB Headers
Series	171097
Application	Board-to-Board, Power, Signal
Overview	<u>EXTreme EnergetiC™ High-Current Connector System</u>
Product Name	EXTreme EnergetiC™
UPC	887191586601

Physical

(p)ower-(s)ignal Configuration	25s - 4p
Breakaway	No
Circuits (Loaded)	29
Circuits (maximum)	29
Color - Resin	Black
Durability (mating cycles max)	200
First Mate / Last Break	Yes
Glow-Wire Compliant	No
Guide to Mating Part	Yes
Material - Metal	Copper Alloy
Material - Plating Mating	Gold over Nickel
Material - Resin	High Temperature Thermoplastic
Net Weight	37.053/g
Number of Rows	5
Orientation	Right Angle
PC Tail Length	2.71mm, 2.74mm
PCB Thickness - Recommended	1.58mm
Packaging Type	Tray
Pitch - Mating Interface	2.00mm, 6.50mm
Polarized to Mating Part	Yes
Polarized to PCB	Yes
Temperature Range - Operating	-40°C to +105°C
Termination Interface: Style	Through Hole - Compliant Pin

Electrical

Current - Maximum per Contact	100A
Voltage - Maximum	40V

Solder Process Data

Duration at Max. Process Temperature (seconds)	40
Lead-free Process Capability	SMC & Wave Capable (TH only)
Max. Cycles at Max. Process Temperature	3
Process Temperature max. C	260

Material Info

Reference - Drawing Numbers

Sales Drawing	SD-171097-0001
---------------	----------------

EU RoHS

**ELV and RoHS
Compliant**

REACH SVHC

Not Reviewed

Low-Halogen Status

Low-Halogen

China RoHS



**Need more information on product
environmental compliance?**

Email productcompliance@molex.com
For a multiple part number RoHS Certificate of
Compliance, [click here](#)

Please visit the [Contact Us](#) section for any
non-product compliance questions.

Search Parts in this Series

[171097Series](#)

Mates With

[171098](#) EXTreme EnergetiC™ PCB
Receptacle

This document was generated on 01/29/2014

PLEASE CHECK WWW.MOLEX.COM FOR LATEST PART INFORMATION