



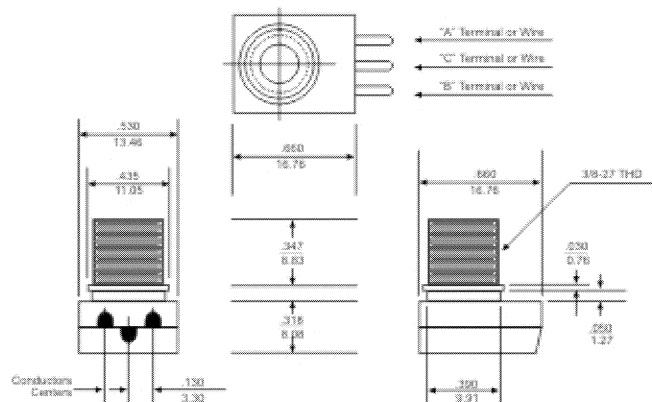
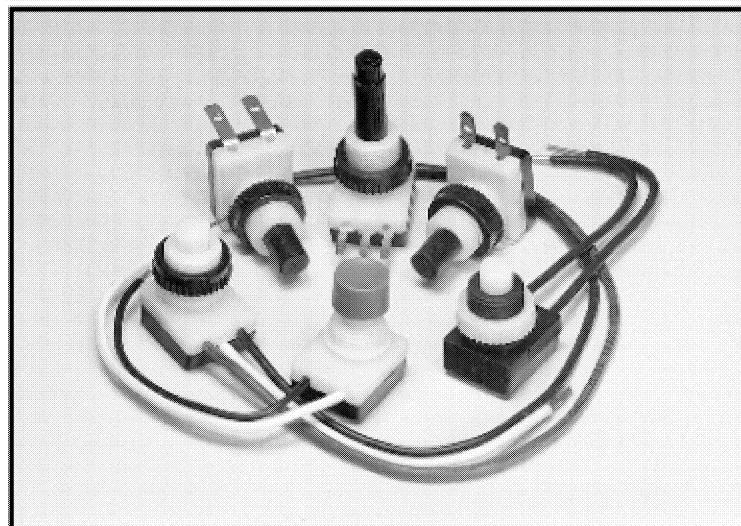
"Since 1975 ... serving the automotive industry and over 2,000 OEM customers"

Push-Button Switches

Series J-188

Rugged, Long Life, Low Cost

(Dimensions: Inches/mm)



Dimensions are given for approximate size only. "A" Body switch dimensions are shown. Other body styles are available. Contact the factory for specific applications and panel hole sizes. This product is covered by one or more of the following U.S.A. patents: 3894603, 4175222, 4288670, 4308440, 4317015, 4345128, 4939328, 4950856, 5132499, 5226529. Others patents are pending.

Switch Configurations:

- Many sizes available. Contact factory for body heights, plunger styles, available colors, & wire/terminal configurations.

Features:

- Spring loaded pre-travel & over-travel available with various configurations.
- Engineering grade plastics used throughout.
- High quality, long life, & low cost.
- Many bezels & snap-on buttons available.
- Rubber boots available.

Durability:

- 50,000 - 500,000 typical cycle life. Contact factory for actuation force & cycle life specifications.

Applications:

- Flashlights, Auto Interior Lighting, Appliances, Computers, Emergency Lights & Power Tools.

J-188-1	
Specifications	UL Recognized
SPST (Single Pole, Single Throw)	
Function: On - Off	
Rating:	125V AC 250V AC 14V DC 6A 1A 10A

J-188-1 Momentary	
Specifications	UL Recognized
SPST (Single Pole, Single Throw)	
Function: On - Off (Initial Momentary "On" Contact)	
Rating:	14V DC 2A

J-188-2	
Specifications	UL Recognized
SPST (Single Pole, Single Throw)	
Function: NOMC (Normally Open, Momentarily Closed)	
Rating:	125V AC 14V DC up to 3A 4A

J-188-2S	
Specifications	UL Recognized
SPST (Single Pole, Single Throw)	
Function: NOMC (Normally Open, Momentarily Closed with overtravel)	
Rating:	125V AC 14V DC up to 3A 4A

J-188-3	
Specifications	UL Recognized
SPST (Single Pole, Single Throw)	
Function: NCMO (Normally Closed, Momentarily Open)	
Rating:	125V AC 14V DC 6A 10A

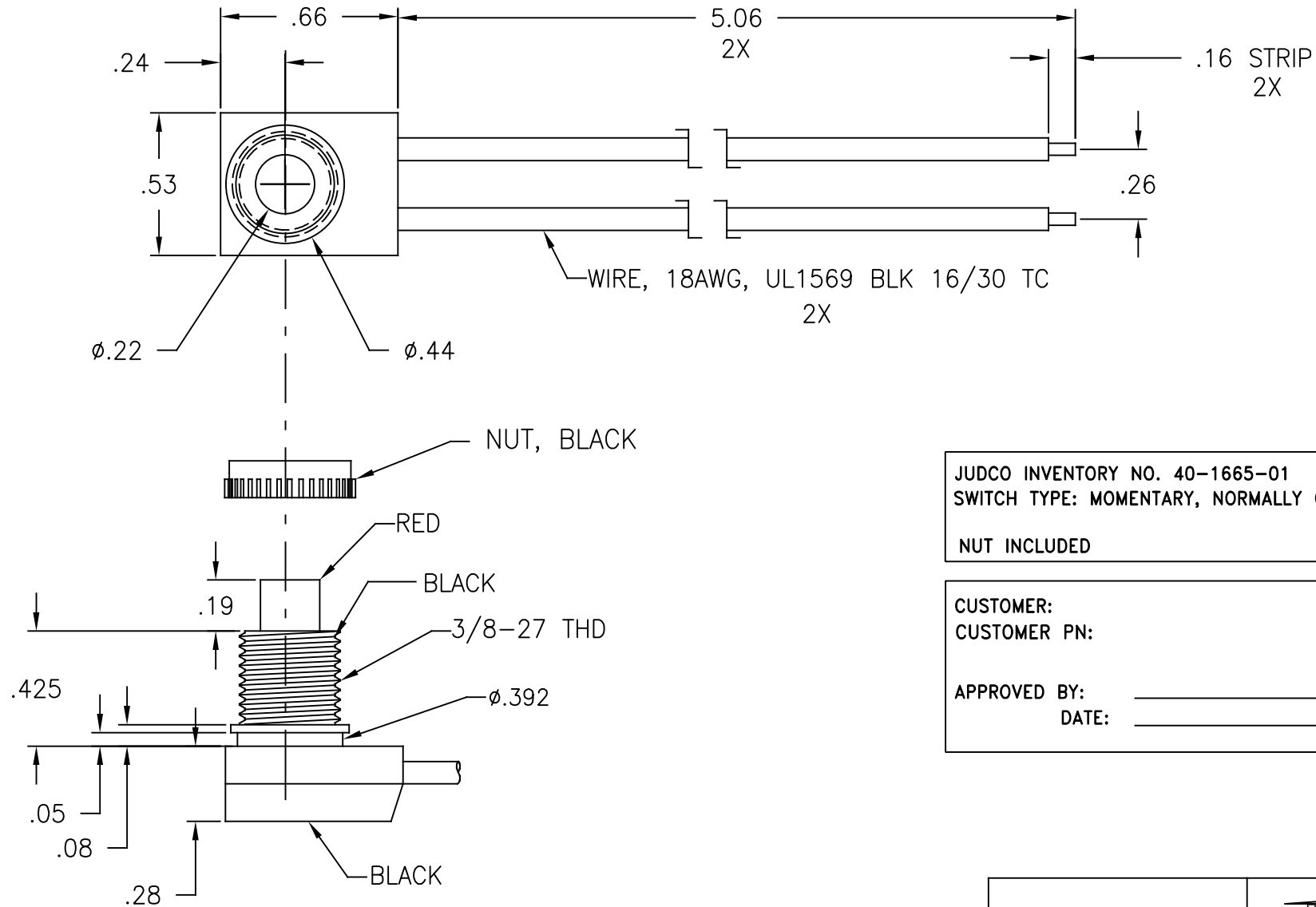
J-188-4	
Specifications	UL Recognized
SPDT (Single Pole, Double Throw)	
Function: On A - On B	
Rating:	125V AC 250V AC 14V DC 1.5A 1A 2A

J-188-5	
Specifications	UL Recognized
SPDT (Single Pole, Double Throw)	
Function: On A - Off - On B - Off	
Rating:	125V AC 250V AC 14V DC 1.5A 1A 2A

J-188-6	
Specifications	UL Recognized
SPDT (Single Pole, Double Throw)	
Function: Normally: On A - Off B Momentary: On B - Off A	
Typical Capacity:	14V DC 2A

J-188-7	
Specifications	UL Recognized
SPDT (Single Pole, Double Throw)	
Function: On B - On A & B - On A - Off	
Typical Capacity:	14V DC 2A

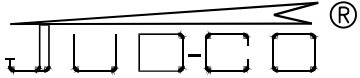
LTR	ECN	DESCRIPTION	APPR	BY	DATE
A	-	INITIAL RELEASE	MT	NH	11-10-11



JUDCO INVENTORY NO. 40-1665-01
 SWITCH TYPE: MOMENTARY, NORMALLY OPEN
 NUT INCLUDED

CUSTOMER:
 CUSTOMER PN:
 APPROVED BY: _____
 DATE: _____

This document embodies a product, component, and/or design proprietary to JUDCO MANUFACTURING INC., and which is protected either as a trade secret, by U.S. Patent, or by copyright. It may not be used in any way without written express consent of JUDCO MANUFACTURING INC.

DIMENSIONS IN INCHES DIMENSIONS ARE REFERENCE			 HARBOR CITY CALIFORNIA	
DRAWN: NH 11-10-11			TITLE OUTLINE J-188A-2	
APPR: KJ 11-10-11			DWG. NO. 1415-1627	
ENG'G: IS 11-10-11			SHEET 1 OF 1	
1415U1627.DWG				