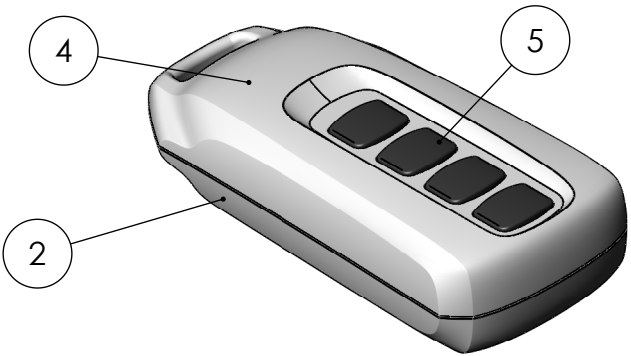
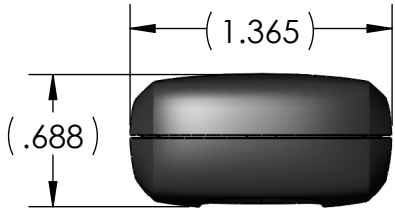
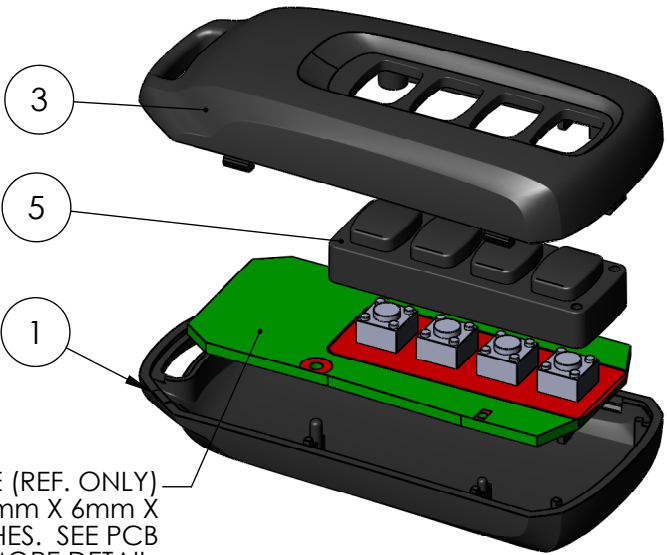


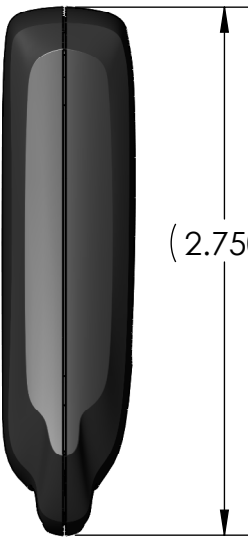
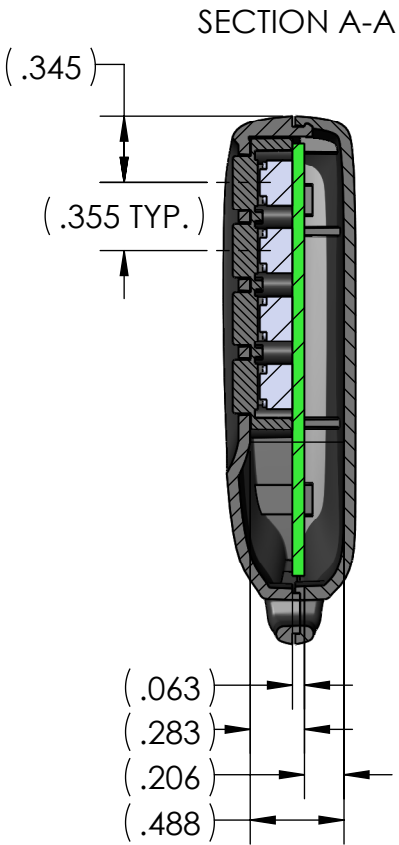
ITEM NO.	PART NUMBER	Rev	DESCRIPTION	Material	MaterialSpec	Color	FlameRating	FB-45-4/QTY.	FB-45-4*14/QTY.
1	FB-45B	-	BASE	ABS	/ABS/PA765/BK	BLACK	UL94V-0	1	-
2	FB-45B*14	-	BASE	ABS	/ABS/PA765/WH	WHITE	UL94V-0	-	1
3	FB-45C-4	-	COVER, 4 BUTTON	ABS	/ABS/PA765/BK	BLACK	UL94V-0	1	-
4	FB-45C-4*14	-	COVER, 4 BUTTON	ABS	/ABS/PA765/WH	WHITE	UL94V-0	-	1
5	FB-45PAD-4	-	4 BUTTON KEYPAD	SHIN ETSU KE-951U Silicone		MATTE BLACK		1	1





PART NUMBER: FB-45-4*14
FLAME RATING: UL94V-0



PART NUMBER: FB-45-4
FLAME RATING: UL94V-0

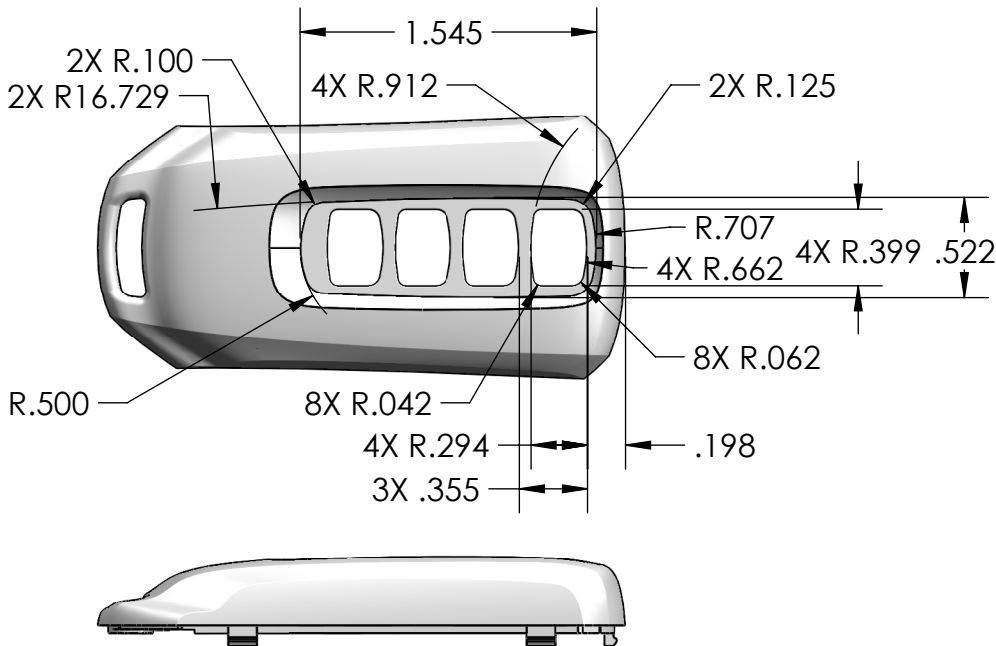


FB-45-4-PCB: PCB TEMPLATE (REF. ONLY)
DESIGNED FOR USE WITH 6mm X 6mm X
4.3mm TACTILE SWITCHES. SEE PCB
TEMPLATE DRAWING FOR MORE DETAIL.

UNLESS OTHERWISE SPECIFIED: DIMENSIONS ARE IN: INCHES[mm] TOLERANCES: ANGULAR: ±2° TWO PLACE DECIMAL: ±.010 THREE PLACE DECIMAL: ±.005 PRINTED GRAPHICS: ±.010	PART NO. FB-45-4		<div><div>1305 CHESTER IND. PARKWAY AVON, OHIO 44011-1083 U.S.A. PH#: 1-800-248-1233, 440-934-0444 FAX#: 440-934-0088</div></div>			
	MATERIAL					
PROPRIETARY AND CONFIDENTIAL THE INFORMATION CONTAINED IN THIS DRAWING IS THE SOLE PROPERTY OF POLYCASE. ANY REPRODUCTION IN PART OR AS A WHOLE WITHOUT THE WRITTEN PERMISSION OF POLYCASE IS PROHIBITED. CAD FILE: FB-45-4	FLAME RATING UL94V-0		SIZE B	FB-45, 4 BUTTON		REV -
		NAME	DATE			
	DRAWN	D.M.F.	6/13/2011			
	CHECKED	B.M.B.	9/8/2011	SCALE: 1:1		SHEET 1 OF 1

REV.	DESCRIPTION	ZONE	BY	APPR'D	DATE
REVISIONS					

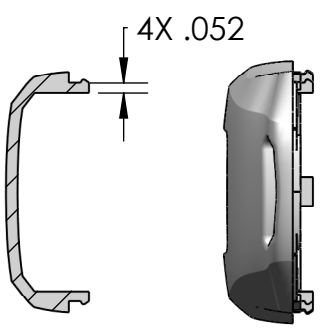
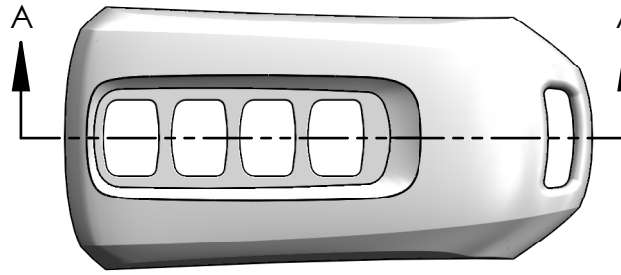
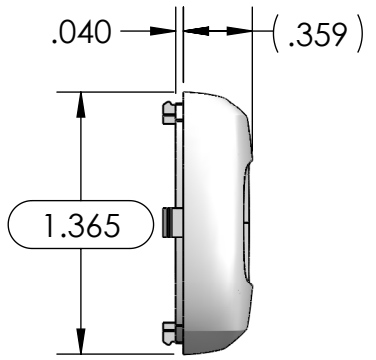
TOLERANCE CHART				
6 SIGMA				
DIMENSION RANGE		TOOL DEPENDENT	NON-TOOL DEPENDENT	
.000	.040	±.0018	±.0042	
.040	.120	±.0024	±.0054	
.120	.240	±.0030	±.0060	
.240	.390	±.0036	±.0066	
.390	.590	±.0042	±.0072	
.590	.870	±.0048	±.0072	
.870	1.180	±.0054	±.0078	
1.180	1.570	±.0060	±.0084	
1.570	2.090	±.0072	±.0096	
2.090	2.760	±.0078	±.0108	
2.760	3.540	±.0090	±.0120	
3.540	4.700	±.0108	±.0132	
4.700	6.300	±.0126	±.0150	
6.300	7.870	±.0150	±.0180	



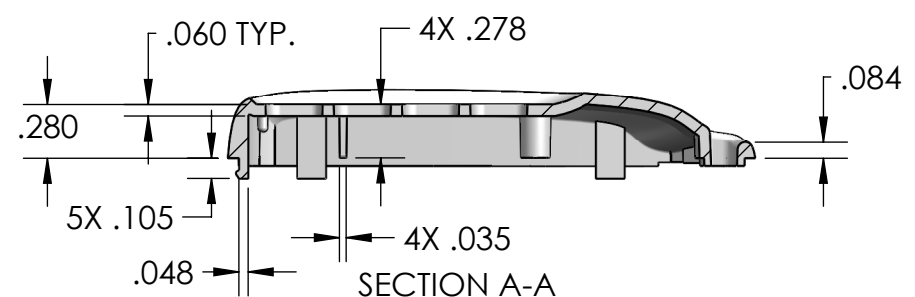
PART NUMBER: FB-45C-4*14
MATERIAL: ABS
MATERIAL SPEC: /ABS/PA765/WH
COLOR: WHITE
FLAME RATING: UL94V-0



PART NUMBER: FB-45C-4
MATERIAL: ABS
MATERIAL SPEC: /ABS/PA765/BK
COLOR: BLACK
FLAME RATING: UL94V-0


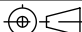


SECTION B-B



SECTION A-A

- NOTES:
1. REFER TO SOLID MODEL FOR COMPLETE PART DEFINITION.
2. (INSPECTION DIMENSION)
3. EJECTOR PINS TO BE FLUSH ±.015
4. FLASH NOT TO EXCEED .005

UNLESS OTHERWISE SPECIFIED: DIMENSIONS ARE IN: INCHES [mm] TOLERANCES: ANGULAR: ±2° TWO PLACE DECIMAL: ±.010 THREE PLACE DECIMAL: ±.005 PRINTED GRAPHICS: ±.010	PART NO. AS NOTED		<div><div>1305 CHESTER IND. PARKWAY AVON, OHIO 44011-1083 U.S.A. PH#: 1-800-248-1233, 440-934-0444 FAX#: 440-934-0088</div></div>		
	MATERIAL AS NOTED				
PROPRIETARY AND CONFIDENTIAL THE INFORMATION CONTAINED IN THIS DRAWING IS THE SOLE PROPERTY OF POLYCASE. ANY REPRODUCTION IN PART OR AS A WHOLE WITHOUT THE WRITTEN PERMISSION OF POLYCASE IS PROHIBITED. CAD FILE: FB-45C-4	FLAME RATING AS NOTED		SIZE B	COVER, 4 BUTTON	REV -
		NAME DATE	SCALE: 1:1		SHEET 1 OF 1
	DRAWN CHECKED	D.M.F. 2/23/2011 B.M.B. 3/15/2011			

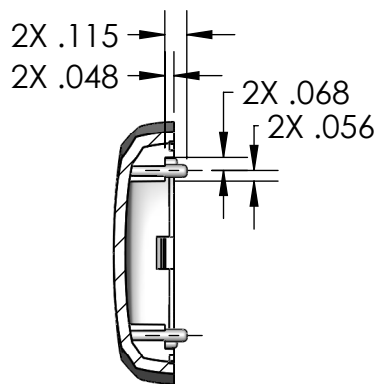
TOLERANCE CHART			
DIMENSION RANGE		6 SIGMA	
		TOOL DEPENDENT	NON-TOOL DEPENDENT
.000	.040	±.0018	±.0042
.040	.120	±.0024	±.0054
.120	.240	±.0030	±.0060
.240	.390	±.0036	±.0066
.390	.590	±.0042	±.0072
.590	.870	±.0048	±.0072
.870	1.180	±.0054	±.0078
1.180	1.570	±.0060	±.0084
1.570	2.090	±.0072	±.0096
2.090	2.760	±.0078	±.0108
2.760	3.540	±.0090	±.0120
3.540	4.700	±.0108	±.0132
4.700	6.300	±.0126	±.0150
6.300	7.870	±.0150	±.0180

D

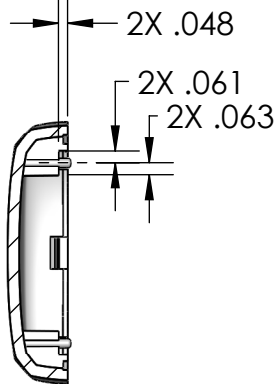
C

B

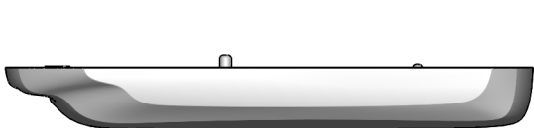
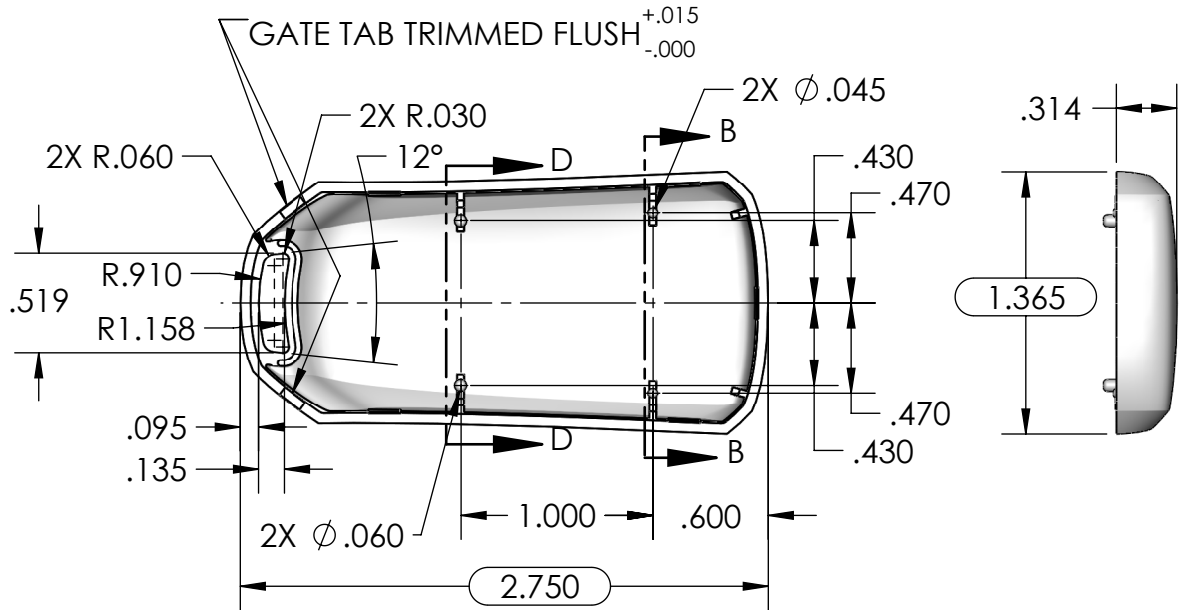
A



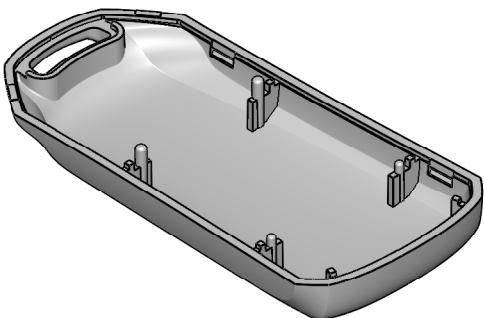
SECTION D-D



SECTION B-B





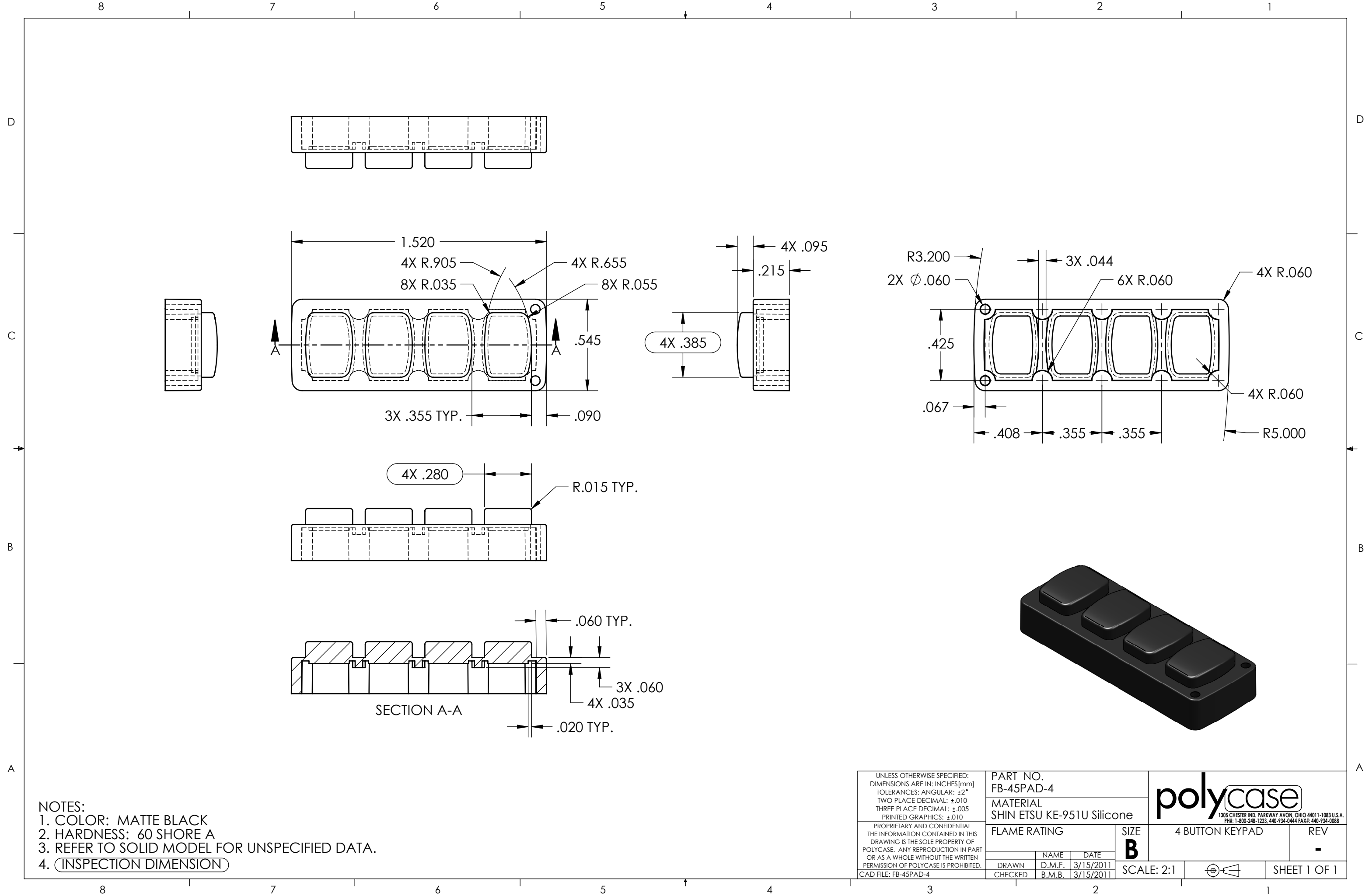
PART NUMBER: FB-45B
MATERIAL: ABS
MATERIAL SPEC: /ABS/PA765/BK
COLOR: BLACK
FLAME RATING: UL94V-0

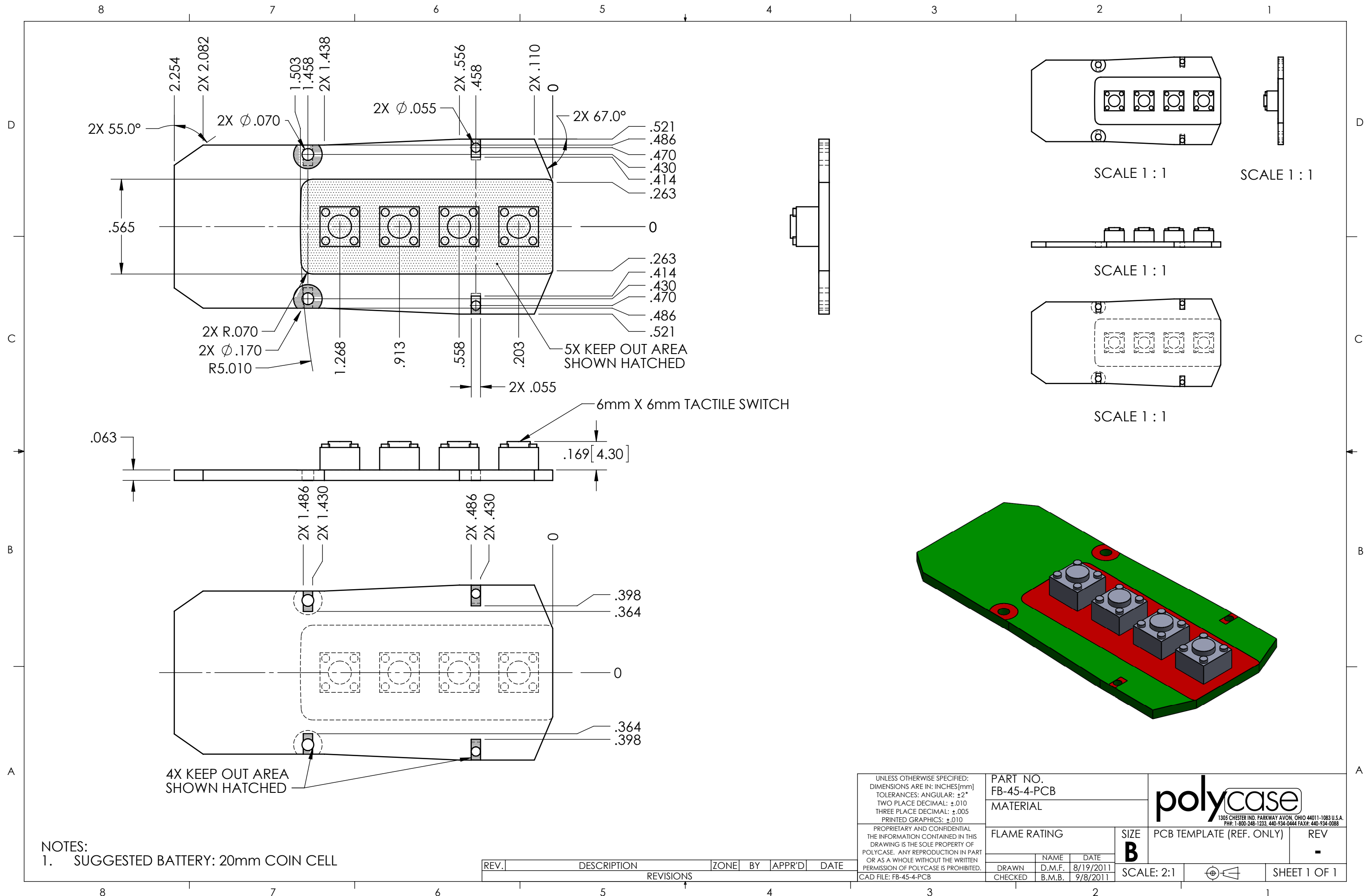


PART NUMBER: FB-45B*14
MATERIAL: ABS
MATERIAL SPEC: /ABS/PA765/WH
COLOR: WHITE
FLAME RATING: UL94V-0

- NOTES:
1. REFER TO SOLID MODEL FOR COMPLETE PART DEFINITION.
 2. (INSPECTION DIMENSION)
 3. EJECTOR PINS TO BE FLUSH ±.015
 4. FLASH NOT TO EXCEED .005



UNLESS OTHERWISE SPECIFIED: DIMENSIONS ARE IN: INCHES [mm] TOLERANCES: ANGULAR: ±2° TWO PLACE DECIMAL: ±.010 THREE PLACE DECIMAL: ±.005 PRINTED GRAPHICS: ±.010	PART NO. AS NOTED		<div><div>1305 CHESTER IND. PARKWAY AVON, OHIO 44011-1083 U.S.A. PH#: 1-800-248-1233, 440-934-0444 FAX#: 440-934-0088</div></div>			
	MATERIAL AS NOTED					
PROPRIETARY AND CONFIDENTIAL THE INFORMATION CONTAINED IN THIS DRAWING IS THE SOLE PROPERTY OF POLYCASE. ANY REPRODUCTION IN PART OR AS A WHOLE WITHOUT THE WRITTEN PERMISSION OF POLYCASE IS PROHIBITED. CAD FILE: FB-45B	FLAME RATING AS NOTED		SIZE B	BASE		REV -
	DRAWN	NAME	DATE			
	CHECKED	D.M.F. B.M.B.	2/23/2011 3/15/2011	SCALE: 1:1		SHEET 1 OF 1





NOTES:
1. SUGGESTED BATTERY: 20mm COIN CELL

REV.	DESCRIPTION	ZONE	BY	APPR'D	DATE
REVISIONS					

UNLESS OTHERWISE SPECIFIED: DIMENSIONS ARE IN: INCHES[mm] TOLERANCES: ANGULAR: ±2° TWO PLACE DECIMAL: ±.010 THREE PLACE DECIMAL: ±.005 PRINTED GRAPHICS: ±.010	PART NO. FB-45-4-PCB		<div> 1305 CHESTER IND. PARKWAY AVON, OHIO 44011-1083 U.S.A. PH#: 1-800-248-1233, 440-934-0444 FAX#: 440-934-0088</div>			
	MATERIAL					
PROPRIETARY AND CONFIDENTIAL THE INFORMATION CONTAINED IN THIS DRAWING IS THE SOLE PROPERTY OF POLYCASE. ANY REPRODUCTION IN PART OR AS A WHOLE WITHOUT THE WRITTEN PERMISSION OF POLYCASE IS PROHIBITED.	FLAME RATING		SIZE B	PCB TEMPLATE (REF. ONLY)	REV -	
		NAME				DATE
	CAD FILE: FB-45-4-PCB	DRAWN CHECKED	D.M.F. B.M.B.	8/19/2011 9/8/2011	SCALE: 2:1	

Enable 3D View