

# CXA-0271

## Dimming/Connector Type

### ■ Features

- 2-output
  - UL60950 approved
  - Applicable panel size\*: 5 to 10 inches
  - With brightness control function (Pulse Wide Modulation mode).
  - With a sensing function for running out of lamp (alarm output).
  - In the high-voltage generator(a terminal and a pattern), an anti-dust measure by silicone application is taken.
- (Notice) Applicable panel size becomes a standard.

### ■ Applications



## CXA-0271 Specifications (Please refer to each specification before use)

### Electrical Characteristics

Item	Unit	Symbol	Specification			Condition					Remark
			min	typ	max	Vin(V)	Vrmt(V)	Vbr(V)	Ta(°C)	RL(kΩ)	
Output Current	mA	lout (Maximum dimmer)	5.7	6.0	6.7	12±0.1	5	0	23±5	74	(*1)
			5.0	6.0	7.0	12±1.2	5	0	0 to +60	74	(*1)
		lout (Minimum dimmer)	1.2	2.0	2.8	12±0.1	5	2.5	23±5	74	(*1)
Input Current	A	lin1	-	0.55	0.70	12±1.2	5	0	23±5	74	Remote ON
	mA	lin2	-		1	12±1.2	0		23±5	74	Remote OFF
Frequency	kHz	Freq1	38	43	48	12±1.2	5	0	23±5	74	
	Hz	Freq2(Duty frequency)	254	305	356	12±1.2	5	2.5	23±5	74	
Open Circuit Voltage	Vrms	Vopen	1250	1500	-	10.8min.	5	0 to 2.5	23±5	∞	Open load
Alarm Signal	V	Vst	4.5	5.0	5.5	12±0.1	5	0 to 2.5	23±5	74	In case of lamp anomaly (*2)
			-	0	0.5	12±0.1	5	0 to 2.5	23±5	74	On a normal operation (*2)

(\*1) Please refer to the connection diagram for details of a dimming method.

(\*2) Please refer to the connection diagram for details of alarm output.

### Other Specifications

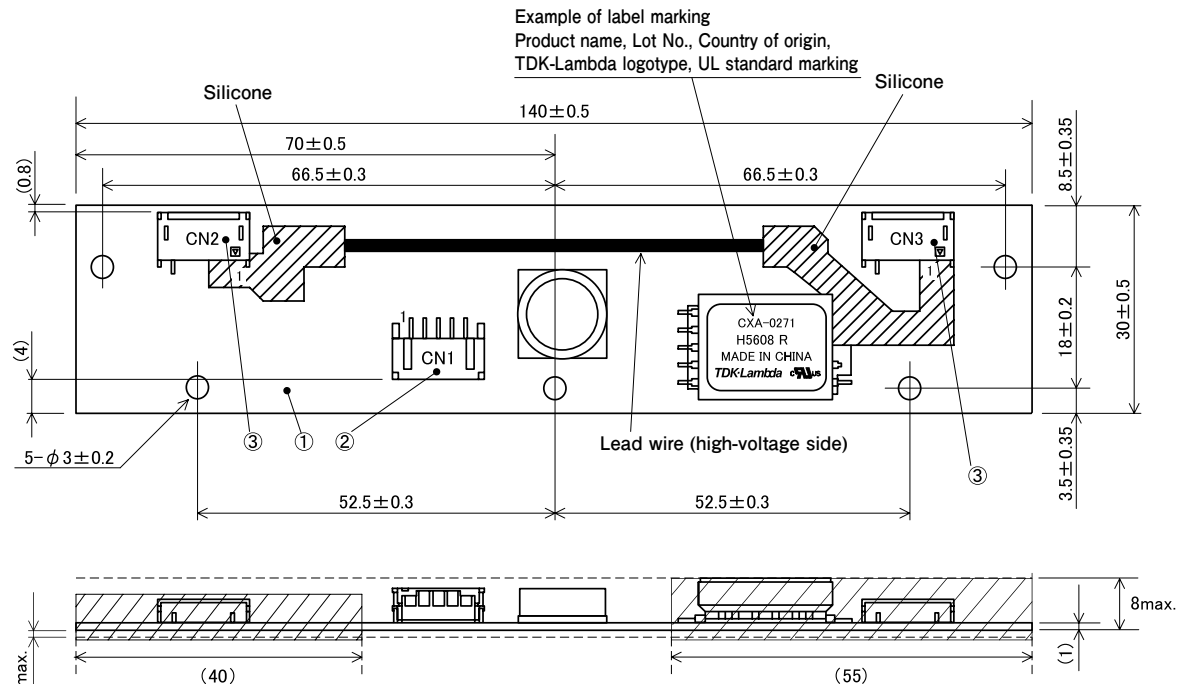
Dimming Function		Yes
Operating Temperature	°C	0 to +60
Storage Temperature	°C	-30 to +85
Operating Humidity Ratio	RH%	95Max
Safety Standard		UL60950
Weight	g	21
Dimensions(WxDxH)	mm	140x30x8 (*3)
Fused Input		Yes
Remote ON / OFF		Yes
Alarm Signal Function		Yes
Shutdown Function		No
Silicone Coating on High Voltage Area		Yes

(\*3) These dimensions are indicated the maximum only H. Others are typical values.

### ■ Conformity to RoHs Directive

This means that, in conformity with EU Directive 2002/95/EC, lead, cadmium, mercury, hexavalent chromium, and specific bromine-based flame retardants, PBB and PBDE, have not been used, except for exempted applications.

# Outline Drawing



(The entire surface within a range of 40mm away from the end of the basein)※ (The entire surface within a range of 55mm away from the end of the basein)※

※From high-voltage generator, please secure space distance more than 3mm in top and bottom right and left.

unit:mm

## Connector

Connector number	Part number	Model/Material	Quantity	Remarks	Recommended applicable connector
①	Printed circuit board PCB	Composite (CEM-3)	1	UL94V-0 t=1.0	—
②	Input connector CN1	S5B-PH-SM4-TB(LF)(SN)	1	JST Mfg. Co., Ltd.	PHR-5
③	Output connector CN2,CN3	SM02 (8.0) B-BHS-1-TB (LF)(SN)	2	JST Mfg. Co., Ltd.	BHR-03VS-1

## Terminal Numbers And Functions

### Input side CN1

Terminal number	Symbol	Rated voltage	Remarks
CN1-1	Vin	10.8 to 13.2V	Power input
CN1-2	GND	0V	Ground
CN1-3	Vbr	0 to 2.5V	Dimmer terminal
CN1-4	Vst(Output)	0/5V	Alarm output Lump open : 5V
CN1-5	Vrmt	0V/2.5V to Vin	Remote terminal 0 to 0.4V : OFF 2.5V to Vin : ON

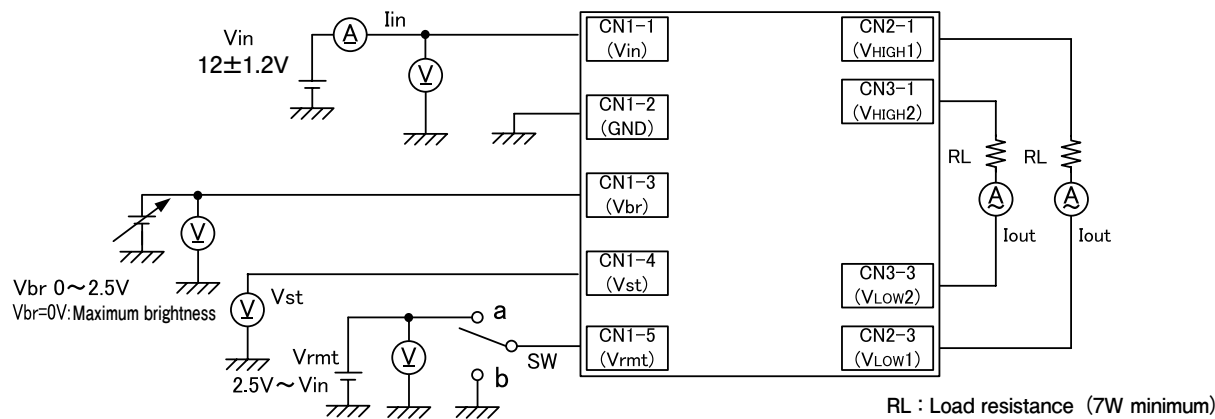
### Output side CN2

Terminal number	Symbol	Rated voltage	Remarks
CN2-1	V <sub>HIGH1</sub>	460Vrms	Output 1
CN2-3	V <sub>LOW1</sub>	(5V)	Output 1 return

### Output side CN3

Terminal number	Symbol	Rated voltage	Remarks
CN3-1	V <sub>HIGH2</sub>	460Vrms	Output 2
CN3-3	V <sub>LOW2</sub>	(5V)	Output 2 return

Connections



Operate as follows by switching SW1.

SW	Unit operation
a	Operation
b	Operation stopped
OPEN	Operation stopped

Protection circuit operation

Load condition	Alarm output (CN1-4)
Normal condition	0.5V max.
When 1 load (lamp) is run-out	4.5 to 5.5V
When 2 loads (lamps) are run-out	4.5 to 5.5V

\* When more than one of RL1- RL2 were opened, output alarm signal of 5V.